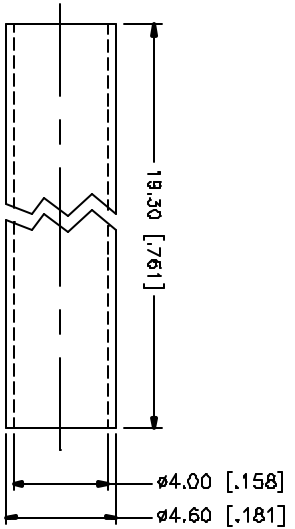
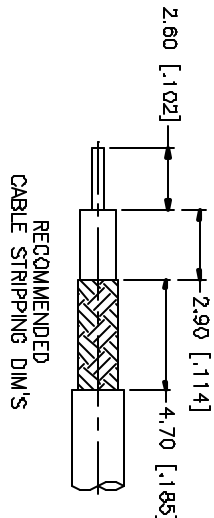
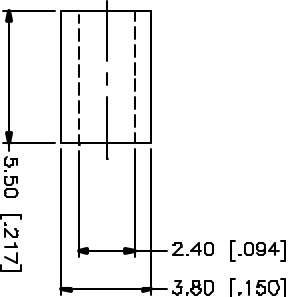
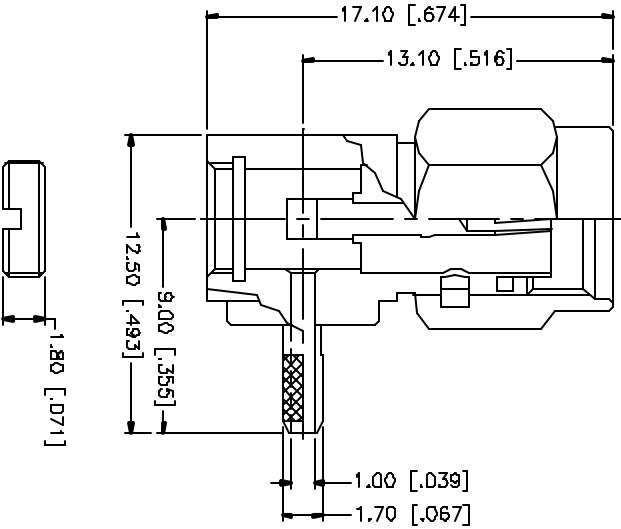


REV.	DATE	DESCRIPTION
A	05/01/04	UPDATE DRAWING FORMAT



NOTE:  
 1. CRIMPED FERRULE  
 HEX CRIMP SIZE .128"  
 2. CONTACT PIN TO SOLDER

REV.	DATE	DESCRIPTION	MATERIAL	FINISH	QTY
8					
7					
6					
5					
4					
3					
2					
1					
DESCRIPTION		HEAT SHRINK TUBING		BLACK	1
		FERRULE		COPPER	1
		COVER		BRASS	1
		CONTACT PIN		BRASS	1
		INSULATOR		TEFLON	1
		HOUSING/BODY		BRASS	1
DESCRIPTION		MATERIAL		FINISH	QTY

UNLESS OTHERWISE SPECIFIED, DIMENSIONS ARE IN INCHES AND FOR EXTERNAL REFERENCE ONLY.
UNLESS OTHERWISE SPECIFIED, DIMENSIONS FOR MILLIMETER ARE TO NEAREST 0.1mm ± 0.25mm
UNLESS OTHERWISE SPECIFIED, DIMENSIONS FOR MILLIMETER ARE TO NEAREST 0.1mm ± 0.50mm
UNLESS OTHERWISE SPECIFIED, DIMENSIONS FOR INCHES ARE TO NEAREST 0.010" ± 0.007"
UNLESS OTHERWISE SPECIFIED, DIMENSIONS FOR INCHES ARE TO NEAREST 0.010" ± 0.015"
UNLESS OTHERWISE SPECIFIED, DIMENSIONS FOR INCHES ARE TO NEAREST 0.010" ± 0.020"

APPROVALS	DATE
DRAWN G.R.S.	05/01/04
CHECKED	
ISSUED	
SHEET 1 OF 1	

CAD FILE	C:/132/132173.DWG
DWG. NO.	132173.DWG
REV.	A
SIZE	A
SCALE	NA

PART DESCRIPTION	SMA R/A CRIMP PLUG (FOR RG-178B/U, 196A/U)
PART NO.	132173

**Amphenol Connex**